



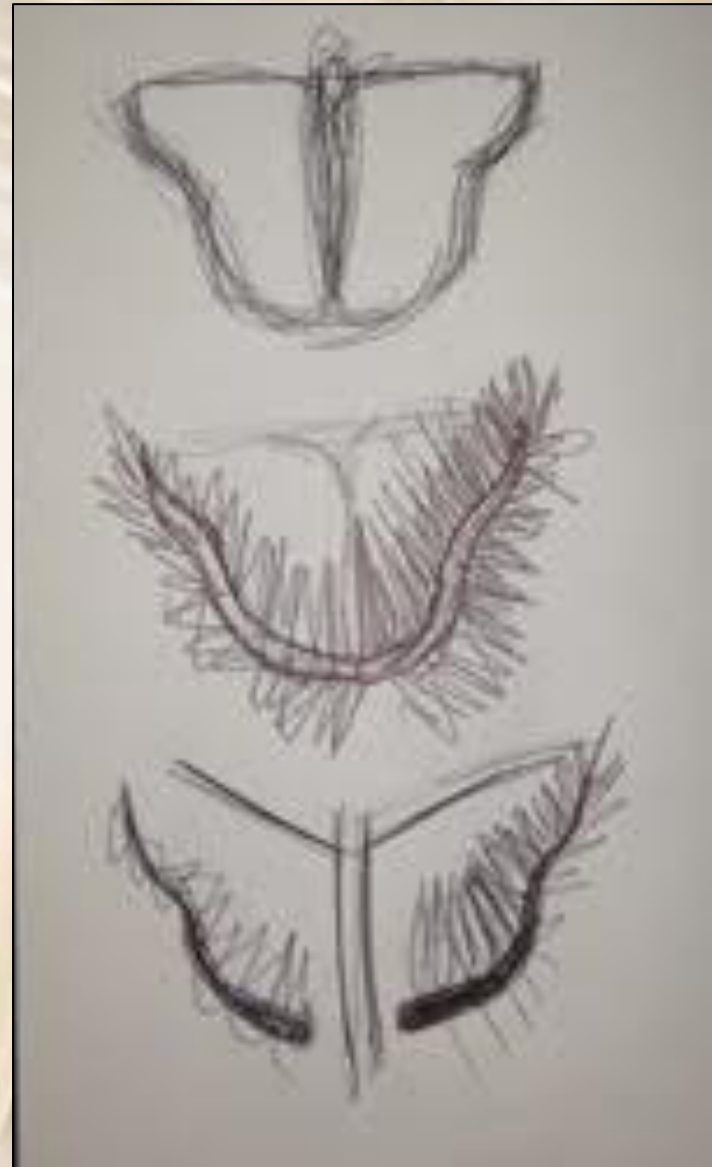
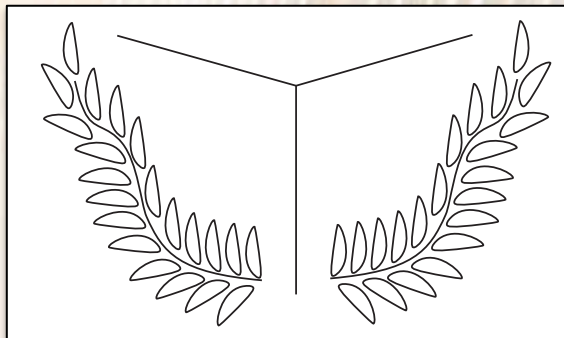
TROPIC HEALTH CENTER

PROCESS

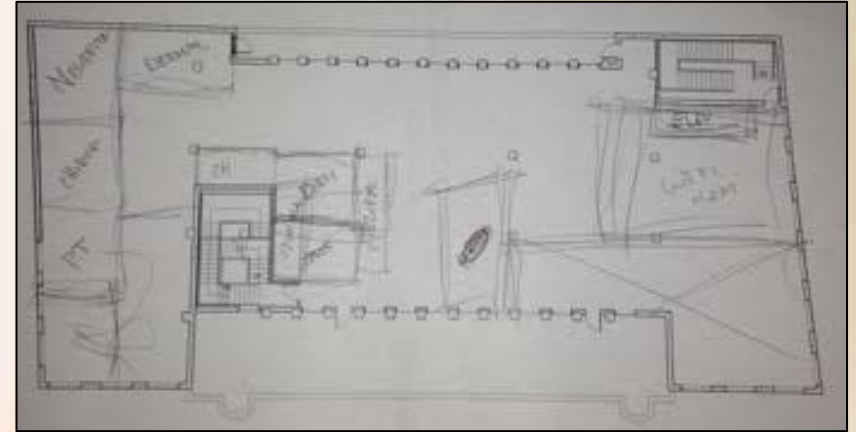
LOGO DEVELOPEMENT



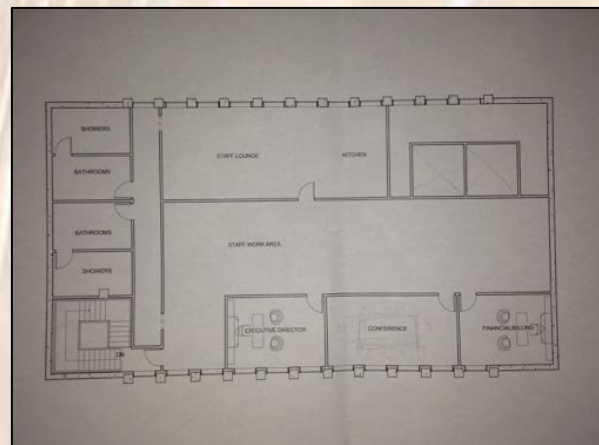
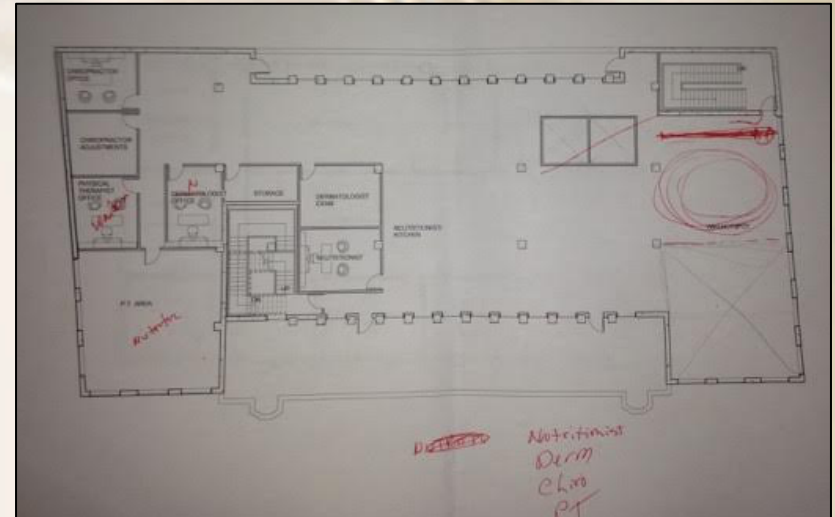
tropical checkered skipper



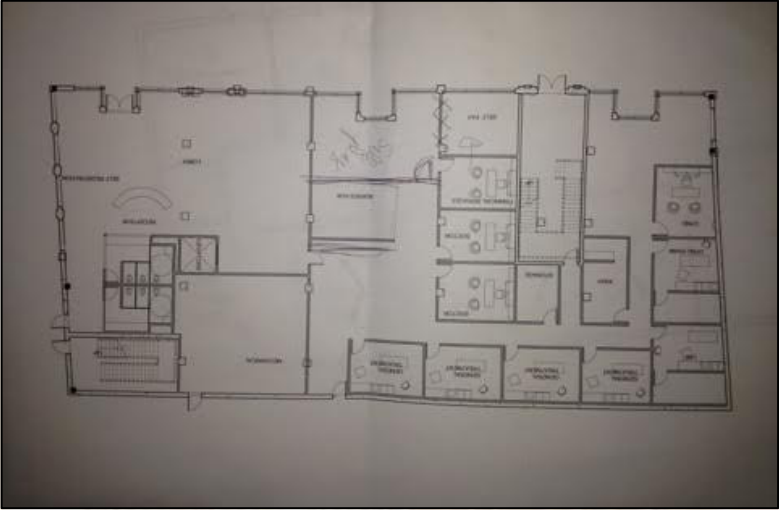
PLAN DEVELOPEMENT



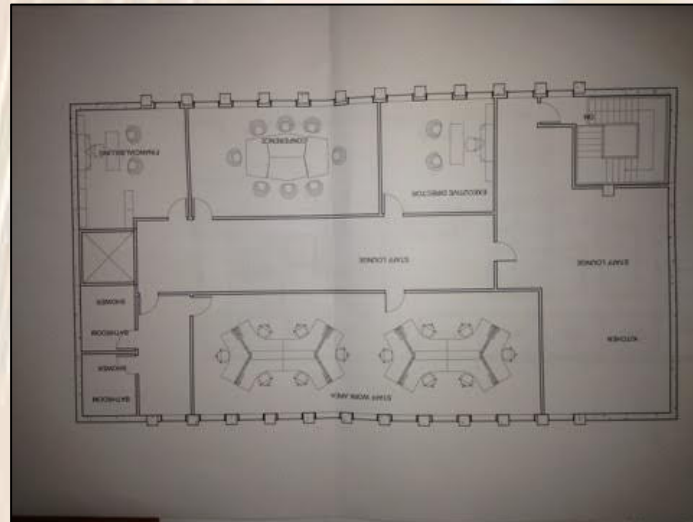
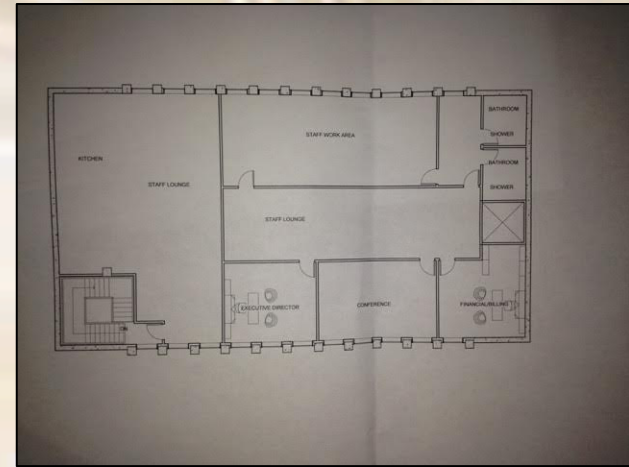
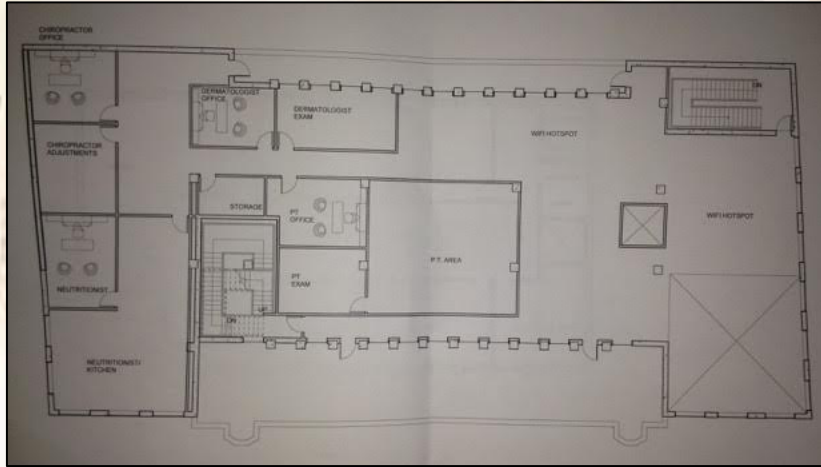
PLAN DEVELOPEMENT



PLAN DEVELOPEMENT



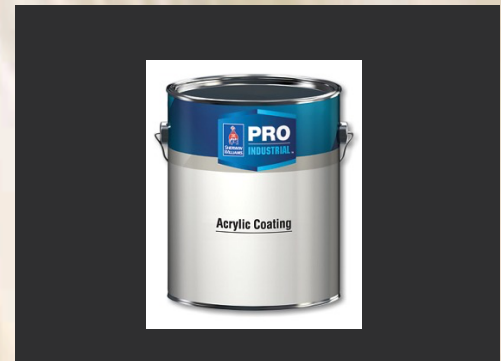
PLAN DEVELOPEMENT



WAYFINDING

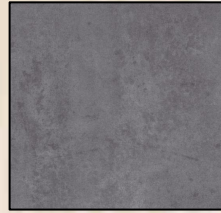
- Way-finding was addressed with changes in ceilings whether it be height changes and or lighting fixture variances.
- It was also addressed with details along main corridor walls.

TYPICAL MATERIALS



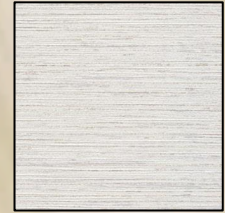
Typical materials

Flooring



FORBO
Eternal Material
13022
Beton Concrete-Vinyle Flooring

Wallcovering



LEN- TEX Wallcoverings
Allegria
3374
Serenade

Rational: The selected vinyl flooring is made from about 50% recycled content and the backing is 100% phthalate free. The material also meets slip resistant standards, fire resistance standards and castor resistance standards. It is an overall good choice. The Wallcovering is a vinyl wallcovering, also meeting fire rating standards. On top of that the Len-Tex has created the material so there is nothing to contaminate the indoor air quality of the space, making it a perfect choice for healthcare.

Typical materials

Flooring



FORBO
Flotex Naturals
010004
Cork Sienna

PAINT



Pro Industrial™ Acrylic Coating
Color: SW6258 Tricorn Black
Product Number: B66T00664

Pro Industrial Acrylic Coating is a fast-drying coating that is perfect for commercial spaces. This product is easy-to-apply by brush, roll or spray.

Rational: : The selected vinyl flooring is made from about 50% recycled content and the backing is 100% phthalate free. The material also meets slip resistant standards, fire resistance standards and castor resistance standards. The slip resistance is essential because the material will be used on ramps. The selected paint was chosen for its durability, high stain resistance, and its achievement of meeting the most stringent VOC regulations.

Typical materials

PAINT



Paint Shield® Microbicidal Interior Latex Paint
Color: SW7073 Network Gray
Product Number: D12W00051

Paint Shield® is the first EPA-registered microbicidal paint that kills greater than 99.9% of Staph (*Staphylococcus aureus*), MRSA (Methicillin-resistant *Staphylococcus aureus*), E. coli (*Escherichia coli*), VRE (*Vancomycin-resistant Enterococcus faecalis*) and Enterobacter aerogenes within two hours of exposure on painted surfaces. It continues to kill 90% of these bacteria even after repeated contamination on painted surfaces. The effectiveness lasts for up to four years as long as the integrity of the surface is maintained.

Rational: This paint is actually able to eliminate dangerous microbicides that come in contact with it, In a health care facility this is very important. The Aluminum door handles meet ADA requirements as well as being easy to clean.

Door Handles



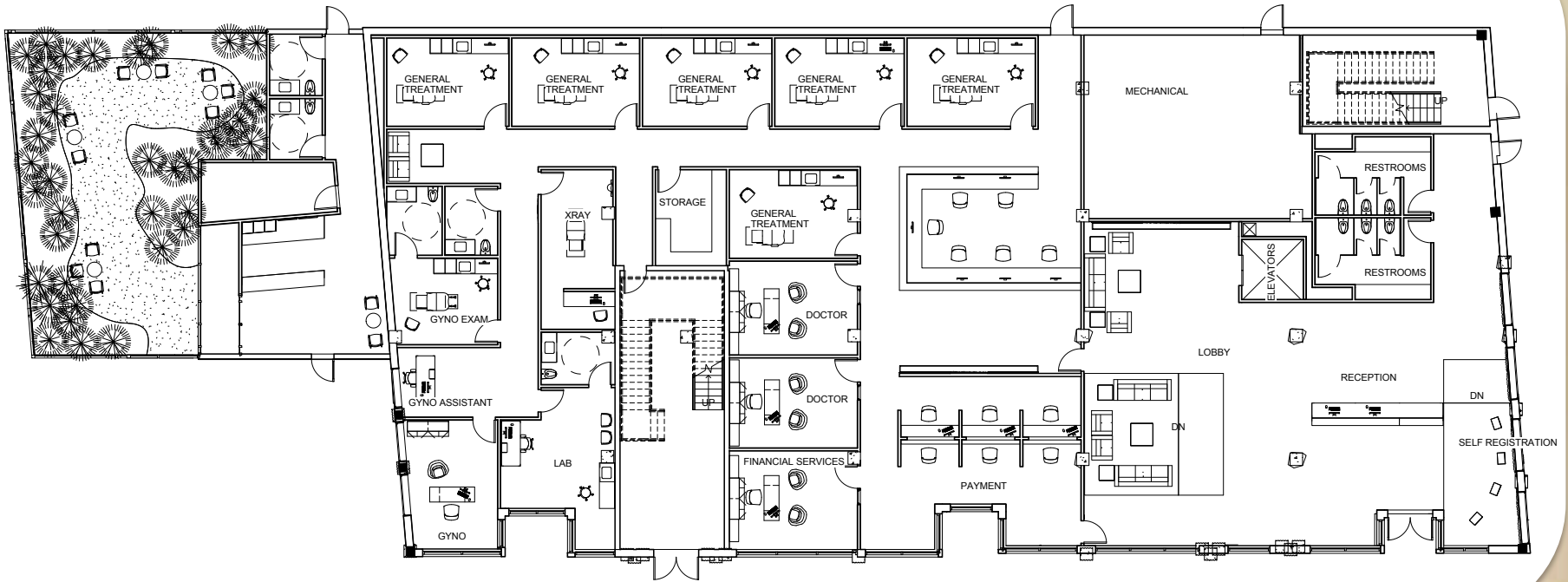
Vendor: Granger
Manufacturer: Battalion
Model: Lever w/Lock, Medium Duty, 19 Series
Mfr. Model # 5TUN3
Finish: Aluminum

TROPIC HEALTH CENTER

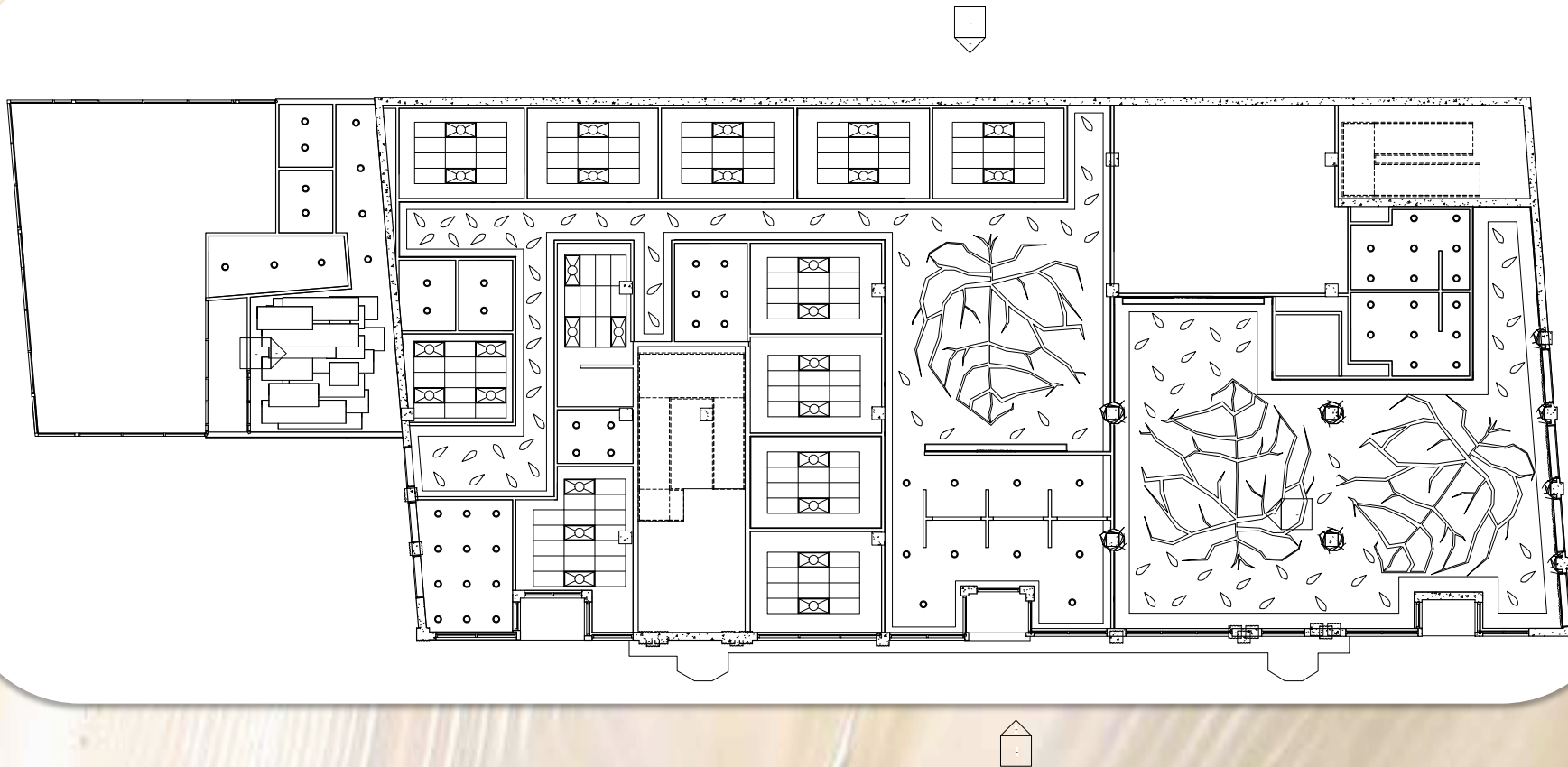




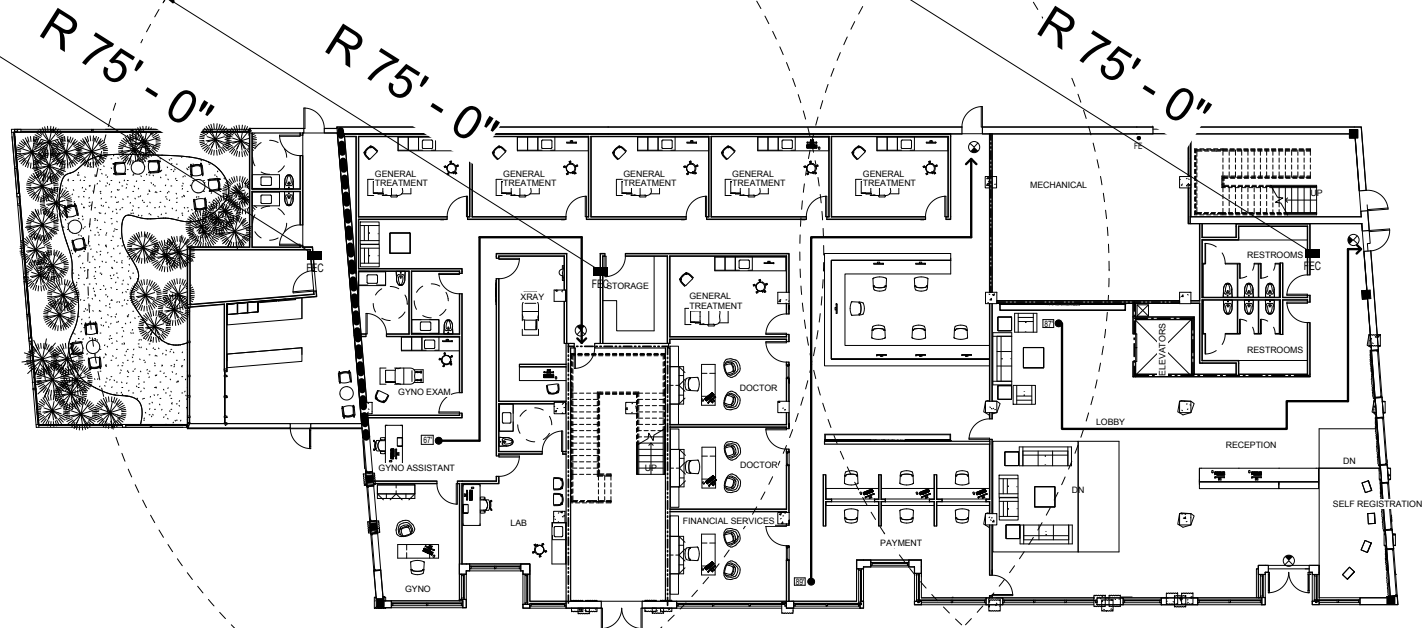
1ST FLOOR



1ST FLOOR RCP

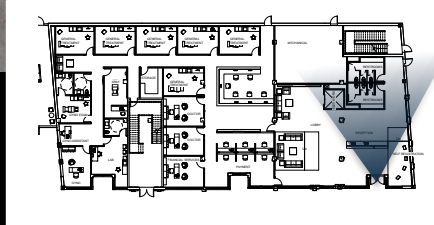


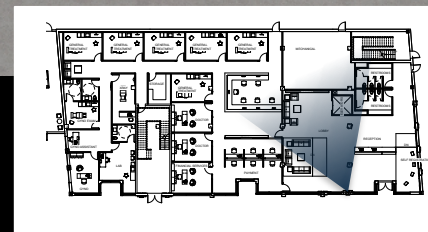
1ST FLOOR FIRE SAFETY PLAN

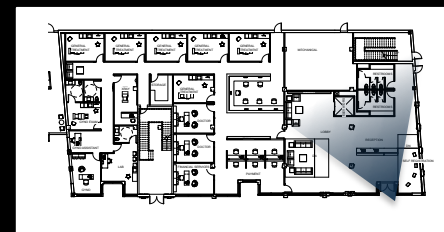


1ST FLOOR INVENTORY

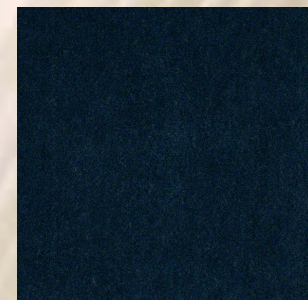
- Reception
- ADA Restrooms
- General treatment rooms
- Doctors offices
- Nurses/Assistants hub
- Gynecology suite
- X-ray
- Lab/blood draw
- Mechanical room





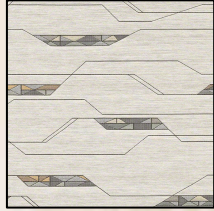


ENTRY



ENTRY

CF Stinson: [Voltage](#) 63315 Lightning



Content:50% Post-Industrial Recycled Nylon, 35% Cotton, 8% Polyester, 7% Rayon

Finish:Enhanced Soil and Stain Protection

Abrasion Resistance ASTM D-4157: Exceeds 100,000 double rubs - heavy duty

Break Strength ASTM D-5034:Warp: 353 lbs. min., Fill: 113 lbs. min.

Tear Strength ASTM D-2261:Warp: 21.5 lbs. min., Fill: 34.4 lbs. min.

Seam Slippage ASTM D-4034:Warp: 81.0 lbs. min., Fill: 119.0 lbs. min.

Brush Pilling ASTM D-3511:Class 4.0 min.

Colorfastness to Light AATCC-16:40 Hours, Class 5.0

Crocking AATCC-8:Dry: Class 5.0, Wet: Class 5.0

California 191-53 Technical

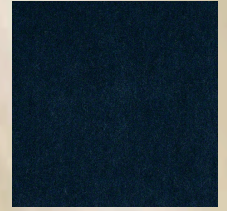
Bulletin 117, Section E:Passed

UFAC:Class 1

NFPA 260:Class 1



CF Stinson: [Peninsula Mohair](#) 64268 Sapphire



Content:Pile: 70% Mohair, 30% Rayon Overall: 45% Mohair, 36% Cotton, 19% Rayon

Finish:Non-Fluorine Stain Resistant

Abrasion Resistance ASTM D-4157:Exceeds 102,000 double rubs - heavy duty

Break Strength ASTM D-5034:Warp: 282 lbs. min., Fill: 143.3 lbs. min.

Seam Slippage ASTM D-4034:Warp: 123.2 lbs. min., Fill: 117.8 lbs. min.

Brush Pilling ASTM D-3511:Class 5.0 min.

Colorfastness to Light AATCC-16:40 Hours, Class 4.0

Crocking AATCC-8:Dry: Class 4.0, Wet: Class 3.0

California 191-53 Technical

Bulletin 117, Section E:Passed

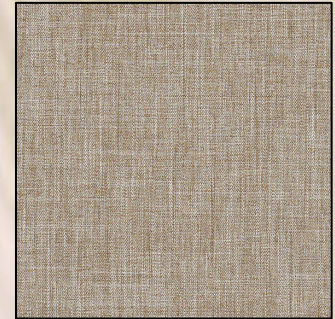
UFAC:Class 1

NFPA 260:Class 1

Rational: The fabrics listed were chosen for a multitude of reasons, such as fire resistance, colorfastness, break strength, and abrasion resistance.



FINANCIAL SERVICES



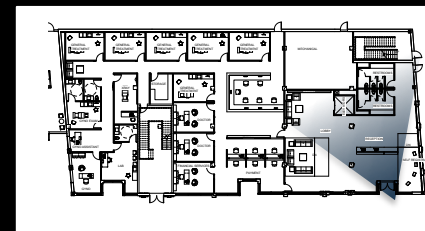
FINANCIAL SERVICES

CF Stinson: Bespoke
63691 Castlerock

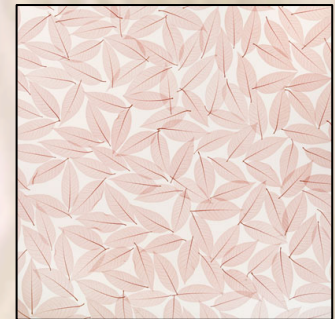
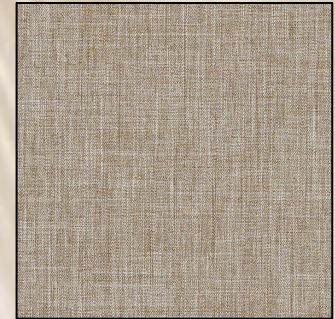


Content:50% Post Consumer Recycled Polyester, 50% Polyester
Finish:Crypton® Non-PFOA Soil & Stain Protection
Abrasion Resistance ASTM D-4157:Exceeds 100,000 double rubs - heavy duty
Break Strength ASTM D-5034:Warp: 478.4 lbs. min., Fill: 367.2 lbs. min.
Tear Strength ASTM D-2261:Warp: 43.5 lbs. min., Fill: 41.2 lbs. min.
Seam Slippage ASTM D-4034:Warp: 59.2 lbs. min., Fill: 66.5 lbs. min.
Brush Pilling ASTM D-3511:Class 5.0 min.
Colorfastness to Light AATCC-16:40 Hours, Class 4.5
Crocking AATCC-8:Dry: Class 5.0, Wet: Class 5.0
Fluid Barrier:Crypton® Integrated Fluid Barrier
Antimicrobial:Crypton® fabric protection features silver ion technology which inhibits the growth of microbes on the protected surface.
California 191-53 Technical
Bulletin 117, Section E:Passed
UFAC:Class 1
NFPA 260:Class 1

Rational: The fabric for the chairs was chosen for a multitude of reasons, such as fire resistance, colorfastness, break strength, and abrasion resistance.



NURSES HUB



NURSES HUB

CF Stinson: Bespoke 63691 Castlerock



Content:50% Post Consumer Recycled Polyester, 50% Polyester
Finish:Crypton® Non-PFOA Soil & Stain Protection
Abrasion Resistance ASTM D-4157:Exceeds 100,000 double rubs - heavy duty
Break Strength ASTM D-5034:Warp: 478.4 lbs. min., Fill: 367.2 lbs. min.
Tear Strength ASTM D-2261:Warp: 43.5 lbs. min., Fill: 41.2 lbs. min.
Seam Slippage ASTM D-4034:Warp: 59.2 lbs. min., Fill: 66.5 lbs. min.
Brush Pilling ASTM D-3511:Class 5.0 min.
Colorfastness to Light AATCC-16:40 Hours, Class 4.5
Crocking AATCC-8:Dry: Class 5.0, Wet: Class 5.0
Fluid Barrier:Crypton® Integrated Fluid Barrier
Antimicrobial:Crypton® fabric protection features silver ion technology which inhibits the growth of microbes on the protected surface.
California 191-53 Technical
Bulletin 117, Section E:Passed
UFAC:Class 1
NFPA 260:Class 1

3FORM

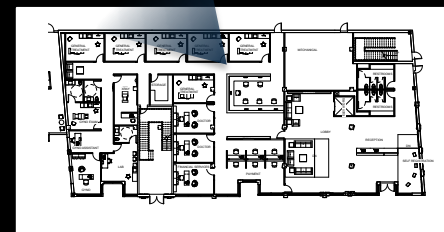


Varia ecoserin-organics-
Fossil leaf rand 173 U

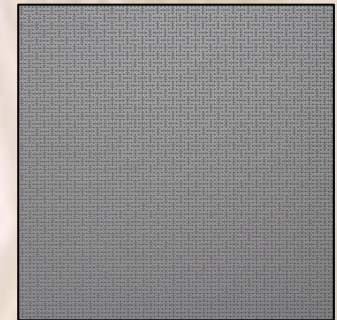
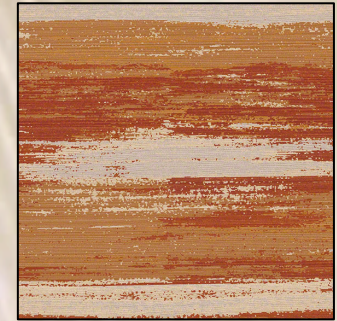
Varia Ecoresin contains 40% Pre-consumer Recycled Content

1/4" Gauge

Rational: This fabric was chosen for a multitude of reasons, such as fire resistance, colorfastness, break strength, and abrasion resistance. The material from 3form assists in way-finding as well as adding a little color to the hall.

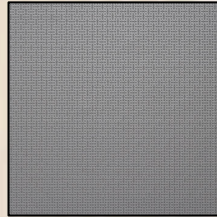


EXAM ROOM



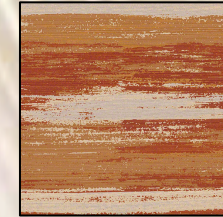
EXAM ROOM

Mayer Fabrics: Interlochen IN-006 Graphite



- **Category:** Vinyl
- **Content:** 100% Vinyl
- **Finish:** PBG+
- **Width:** 54"
- **Abrasion:** 1,155,000 double rubs

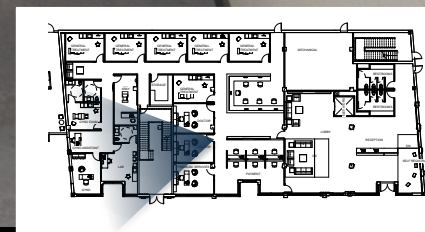
CF Stinson: Vapor 64102 Canyon



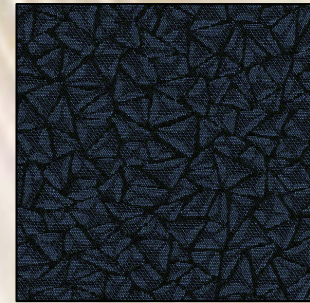
Content:68% Post Consumer Recycled Polyester, 25%
Solution Dyed Nylon, 7% Polyester
Finish:Non-PFOA Stain Resistant
Abrasion Resistance ASTM D-4157:Exceeds 100,000
double rubs - heavy duty
Break Strength ASTM D-5034:Warp: 310.0 lbs. min., Fill:
394.0 lbs. min
Seam Slippage ASTM D-4034:Warp: 84.0 lbs. min., Fill:
121.5 lbs. min
Brush Pilling ASTM D-3511:Class 3.5 min.
Colorfastness to Light AATCC-16:40 Hours, Class 4.5
Croaking AATCC-8:Dry: Class 5.0, Wet: Class 5.0
California 191-53 Technical
Bulletin 117, Section E:Passed
UFAC:Class 1
NFPA 260:Class 1



Rational:: The fabrics listed were chosen for a multitude of reasons, such as fire resistance, colorfastness, break strength, and abrasion resistance. Vapor also has a gold rating from Greenguard.

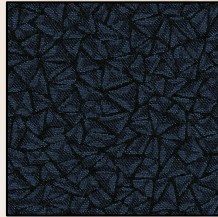


CLOSED OFFICE



CLOSED OFFICE

CF Stinson: Glacier 5718 Sapphire



Content:30% Post-Industrial Recycled Polyester, 27% Polyester, 27% Acrylic, 16% Post-Consumer Recycled Polyester

Abrasion Resistance ASTM D-4157:Exceeds 60,000 double rubs - heavy duty

Break Strength ASTM D-5034:Warp: 100.0 lbs. min., Fill: 100.0 lbs. min.

Tear Strength ASTM D-2261:Warp: 14 lbs. min., Fill: 10 lbs. min.

Seam Slippage ASTM D-4034:Warp: 64.0 lbs. min., Fill: 66.0 lbs. min.

Brush Pilling ASTM D-3511:Class 5.0 min.

Colorfastness to Light AATCC-16:40 Hours, Class 4.0

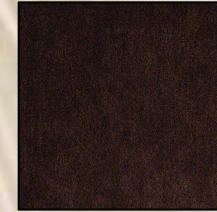
Crocking AATCC-8:Dry: Class 4.0, Wet: Class 3.0

California 191-53 Technical

Bulletin 117, Section E:Passed

UFAC:Class 1

CF Stinson: Voltage 64269 Mink



Content:Pile: 70% Mohair, 30% Rayon Overall: 45% Mohair, 36% Cotton, 19% Rayon

Finish:Non-Fluorine Stain Resistant

Abrasion Resistance ASTM D-4157:Exceeds 102,000 double rubs - heavy duty

Break Strength ASTM D-5034:Warp: 282 lbs. min., Fill: 143.3 lbs. min.

Seam Slippage ASTM D-4034:Warp: 123.2 lbs. min., Fill: 117.8 lbs. min.

Brush Pilling ASTM D-3511:Class 5.0 min.

Colorfastness to Light AATCC-16:40 Hours, Class 4.0

Crocking AATCC-8:Dry: Class 4.0, Wet: Class 3.0

California 191-53 Technical

Bulletin 117, Section E:Passed

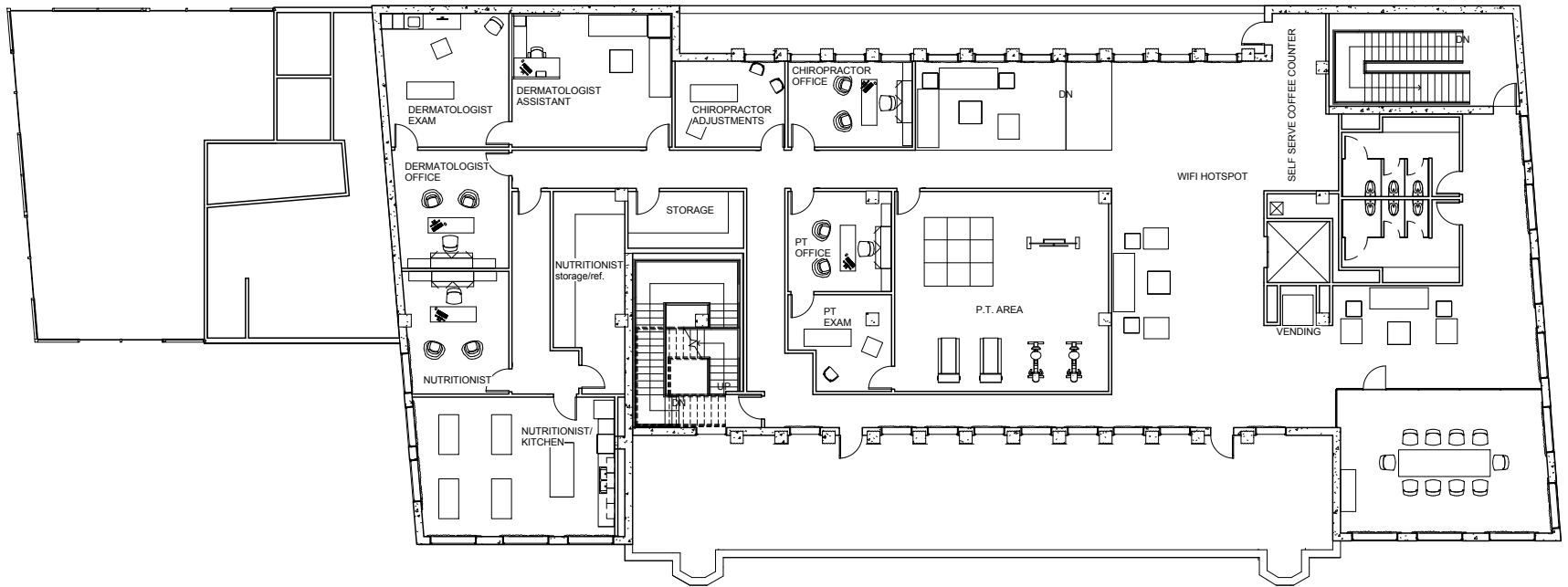
UFAC:Class 1

NFPA 260:Class 1

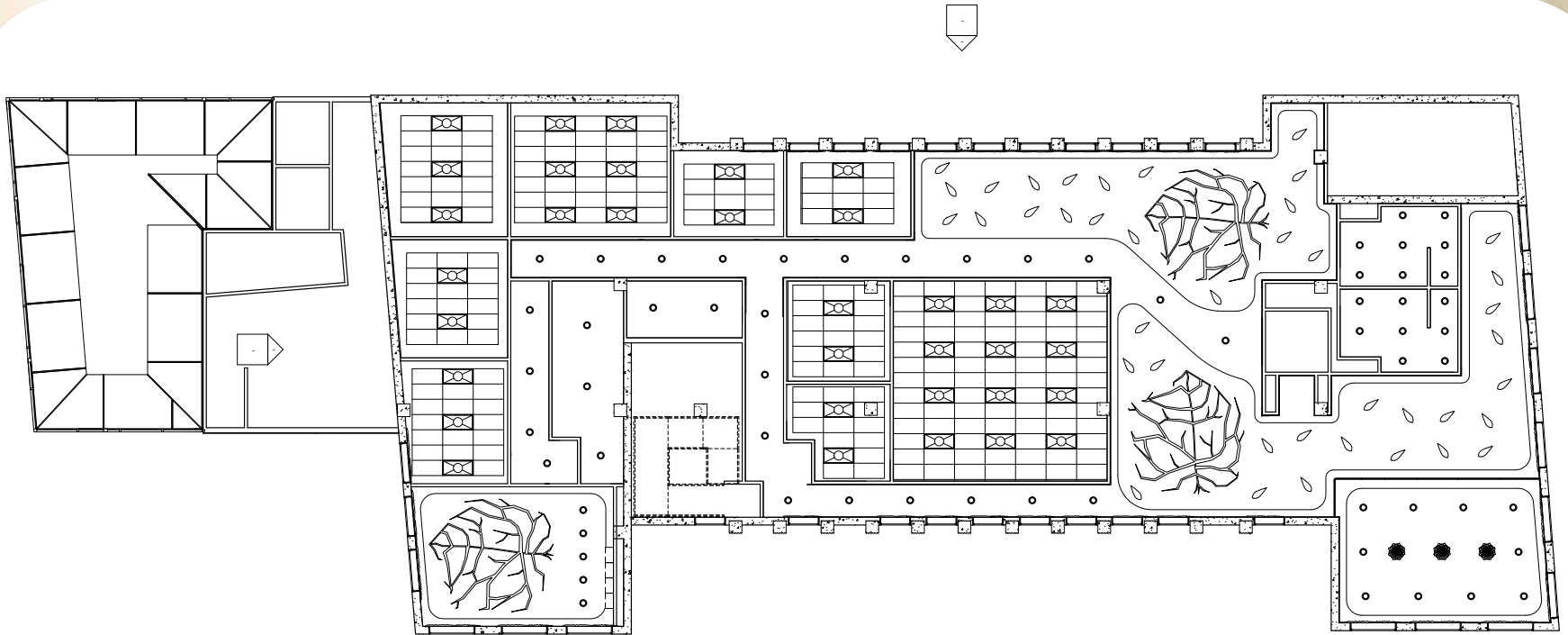


Rational:The fabrics listed were chosen for a multitude of reasons, such as fire resistance, colorfastness, break strength, and abrasion resistance. Glacier also has a gold rating from Greenguard

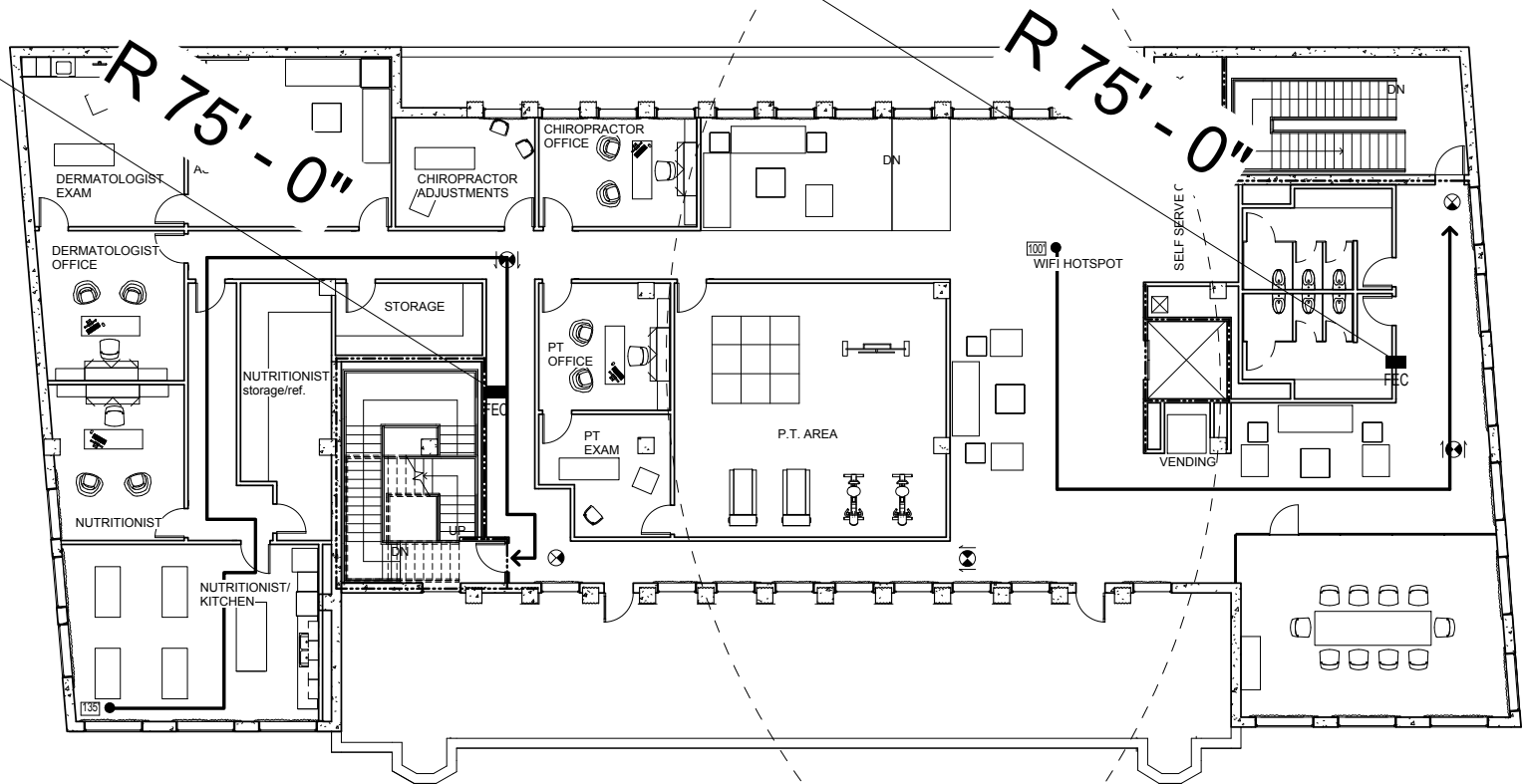
2ND FLOOR



2ND FLOOR RCP

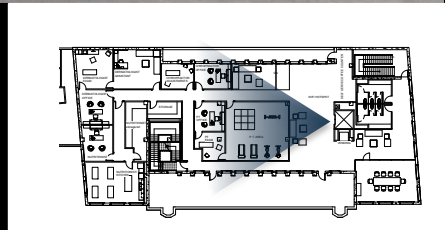


2ND FLOOR FIRE SAFETY PLAN

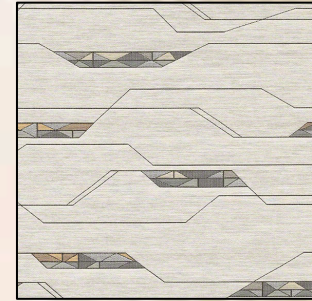


2ND FLOOR INVENTORY

- Specialists
 - Dermatology
 - Chiropractor
 - Physical therapy
 - Nutritionist
- Wifi hotspot
- Study area
- Storage

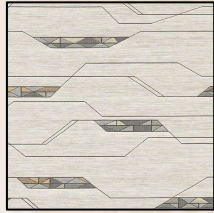


WIFI HOTSPOT



WIFI HOTSPOT

CF Stinson: [Voltage](#) 63315 Lightning



Content: 50% Post-Industrial Recycled Nylon, 35% Cotton, 8% Polyester, 7% Rayon

Finish: Enhanced Soil and Stain Protection

Abrasion Resistance ASTM D-4157: Exceeds 100,000 double rubs - heavy duty

Break Strength ASTM D-5034: Warp: 353 lbs. min., Fill: 113 lbs. min.

Tear Strength ASTM D-2261: Warp: 21.5 lbs. min., Fill: 34.4 lbs. min.

Seam Slippage ASTM D-4034: Warp: 81.0 lbs. min., Fill: 119.0 lbs. min.

Brush Pilling ASTM D-3511: Class 4.0 min.

Colorfastness to Light AATCC-16: 40 Hours, Class 5.0

Crocking AATCC-8: Dry: Class 5.0, Wet: Class 5.0

California 191-53 Technical

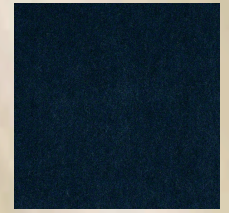
Bulletin 117, Section E: Passed

UFAC: Class 1

NFPA 260: Class 1



CF Stinson: [Peninsula Mohair](#) 64268 Sapphire



Content: Pile: 70% Mohair, 30% Rayon Overall: 45% Mohair, 36% Cotton, 19% Rayon

Finish: Non-Fluorine Stain Resistant

Abrasion Resistance ASTM D-4157: Exceeds 102,000 double rubs - heavy duty

Break Strength ASTM D-5034: Warp: 282 lbs. min., Fill: 143.3 lbs. min.

Seam Slippage ASTM D-4034: Warp: 123.2 lbs. min., Fill: 117.8 lbs. min.

Brush Pilling ASTM D-3511: Class 5.0 min.

Colorfastness to Light AATCC-16: 40 Hours, Class 4.0

Crocking AATCC-8: Dry: Class 4.0, Wet: Class 3.0

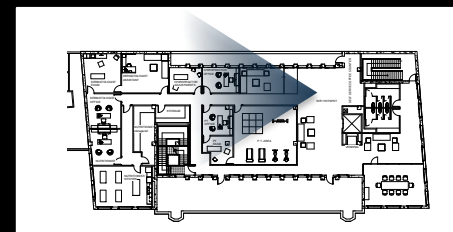
California 191-53 Technical

Bulletin 117, Section E: Passed

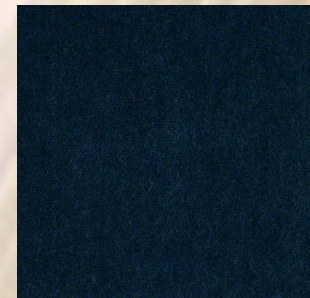
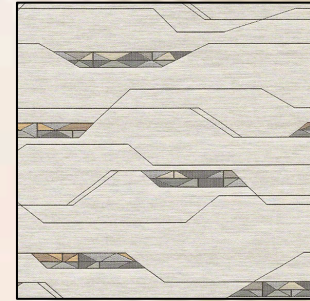
UFAC: Class 1

NFPA 260: Class 1

Rational: The fabrics listed were chosen for a multitude of reasons, such as fire resistance, colorfastness, break strength, and abrasion resistance.

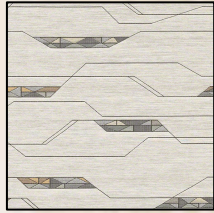


WIFI HOTSPOT



WIFI HOTSPOT

CF Stinson: [Voltage](#) 63315 Lightning



Content:50% Post-Industrial Recycled Nylon, 35% Cotton, 8% Polyester, 7% Rayon

Finish:Enhanced Soil and Stain Protection

Abrasion Resistance ASTM D-4157: Exceeds 100,000 double rubs - heavy duty

Break Strength ASTM D-5034:Warp: 353 lbs. min., Fill: 113 lbs. min.

Tear Strength ASTM D-2261:Warp: 21.5 lbs. min., Fill: 34.4 lbs. min.

Seam Slippage ASTM D-4034:Warp: 81.0 lbs. min., Fill: 119.0 lbs. min.

Brush Pilling ASTM D-3511:Class 4.0 min.

Colorfastness to Light AATCC-16:40 Hours, Class 5.0

Crocking AATCC-8:Dry: Class 5.0, Wet: Class 5.0

California 191-53 Technical

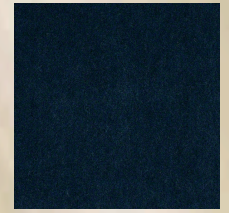
Bulletin 117, Section E:Passed

UFAC:Class 1

NFPA 260:Class 1



CF Stinson: [Peninsula Mohair](#) 64268 Sapphire



Content:Pile: 70% Mohair, 30% Rayon Overall: 45% Mohair, 36% Cotton, 19% Rayon

Finish:Non-Fluorine Stain Resistant

Abrasion Resistance ASTM D-4157:Exceeds 102,000 double rubs - heavy duty

Break Strength ASTM D-5034:Warp: 282 lbs. min., Fill: 143.3 lbs. min.

Seam Slippage ASTM D-4034:Warp: 123.2 lbs. min., Fill: 117.8 lbs. min.

Brush Pilling ASTM D-3511:Class 5.0 min.

Colorfastness to Light AATCC-16:40 Hours, Class 4.0

Crocking AATCC-8:Dry: Class 4.0, Wet: Class 3.0

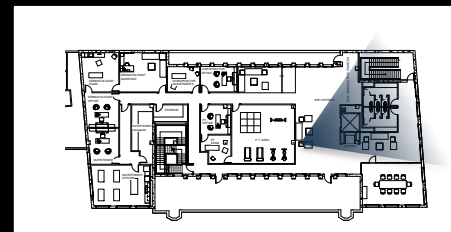
California 191-53 Technical

Bulletin 117, Section E:Passed

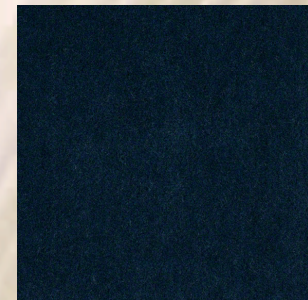
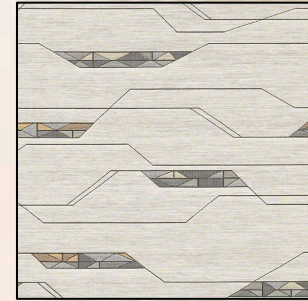
UFAC:Class 1

NFPA 260:Class 1

Rational: The fabrics listed were chosen for a multitude of reasons, such as fire resistance, colorfastness, break strength, and abrasion resistance.

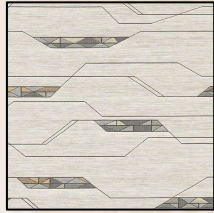


2ND FLOOR ELEVATOR LOBBY



2ND FLOOR ELEVATOR LOBBY

CF Stinson: [Voltage](#) 63315 Lightning



Content:50% Post-Industrial Recycled Nylon, 35% Cotton, 8% Polyester, 7% Rayon

Finish:Enhanced Soil and Stain Protection

Abrasion Resistance ASTM D-4157: Exceeds 100,000 double rubs - heavy duty

Break Strength ASTM D-5034:Warp: 353 lbs. min., Fill: 113 lbs. min.

Tear Strength ASTM D-2261:Warp: 21.5 lbs. min., Fill: 34.4 lbs. min.

Seam Slippage ASTM D-4034:Warp: 81.0 lbs. min., Fill: 119.0 lbs. min.

Brush Pilling ASTM D-3511:Class 4.0 min.

Colorfastness to Light AATCC-16:40 Hours, Class 5.0

Crocking AATCC-8:Dry: Class 5.0, Wet: Class 5.0

California 191-53 Technical

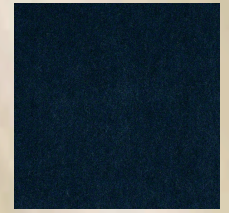
Bulletin 117, Section E:Passed

UFAC:Class 1

NFPA 260:Class 1



CF Stinson: [Peninsula Mohair](#) 64268 Sapphire



Content:Pile: 70% Mohair, 30% Rayon Overall: 45% Mohair, 36% Cotton, 19% Rayon

Finish:Non-Fluorine Stain Resistant

Abrasion Resistance ASTM D-4157:Exceeds 102,000 double rubs - heavy duty

Break Strength ASTM D-5034:Warp: 282 lbs. min., Fill: 143.3 lbs. min.

Seam Slippage ASTM D-4034:Warp: 123.2 lbs. min., Fill: 117.8 lbs. min.

Brush Pilling ASTM D-3511:Class 5.0 min.

Colorfastness to Light AATCC-16:40 Hours, Class 4.0

Crocking AATCC-8:Dry: Class 4.0, Wet: Class 3.0

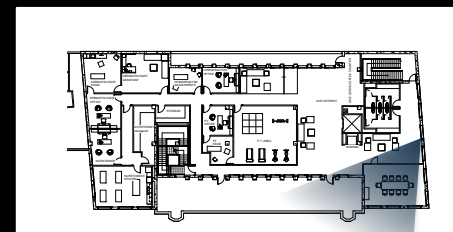
California 191-53 Technical

Bulletin 117, Section E:Passed

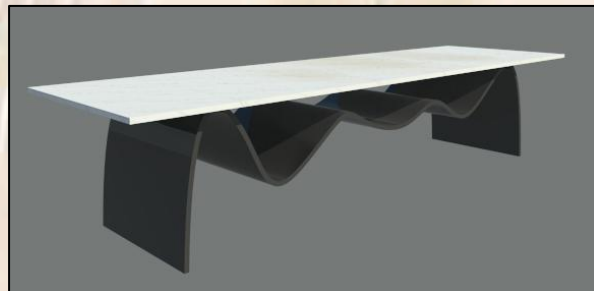
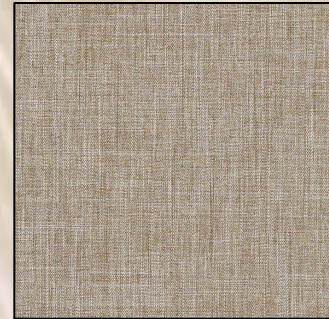
UFAC:Class 1

NFPA 260:Class 1

Rational: The fabrics listed were chosen for a multitude of reasons, such as fire resistance, colorfastness, break strength, and abrasion resistance.



CONFERENCE ROOM



CONFERENCE ROOM

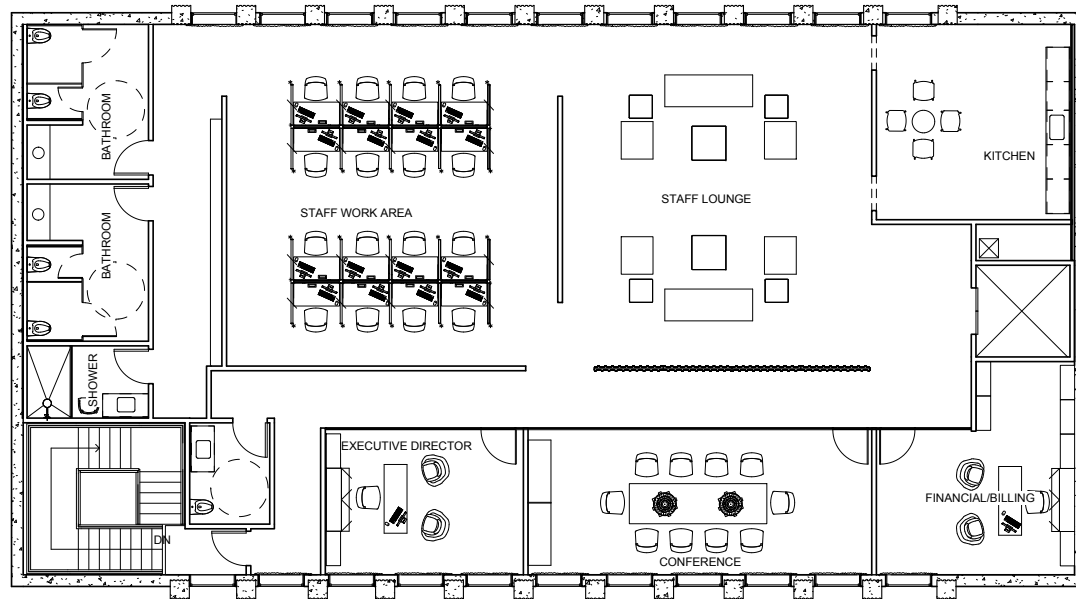
CF Stinson: Bespoke
63691 Castlerock



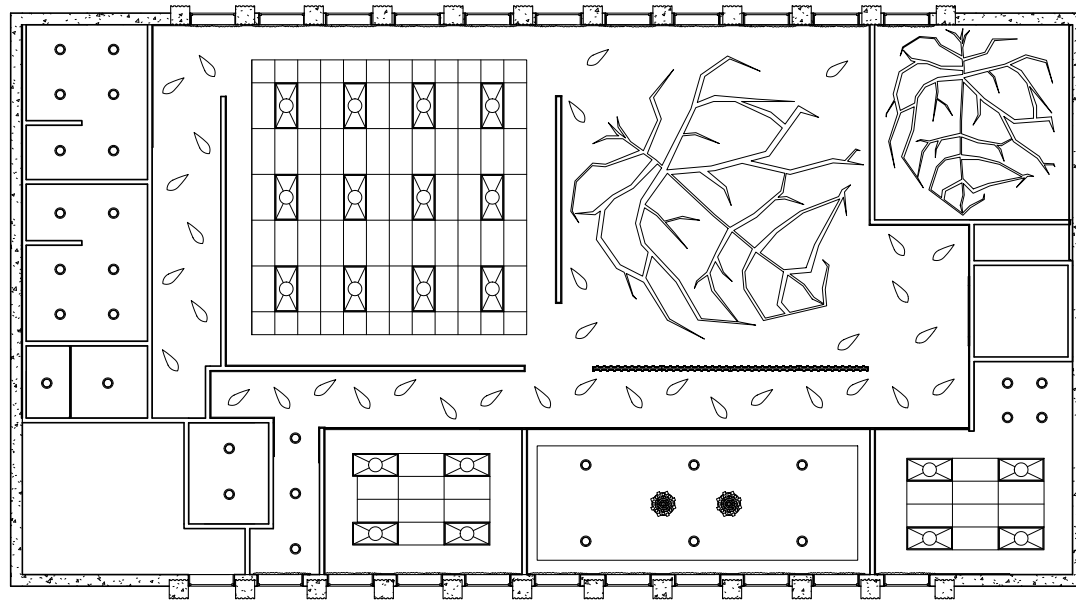
Content:50% Post Consumer Recycled Polyester, 50% Polyester
Finish:Crypton® Non-PFOA Soil & Stain Protection
Abrasion Resistance ASTM D-4157:Exceeds 100,000 double rubs - heavy duty
Break Strength ASTM D-5034:Warp: 478.4 lbs. min., Fill: 367.2 lbs. min.
Tear Strength ASTM D-2261:Warp: 43.5 lbs. min., Fill: 41.2 lbs. min.
Seam Slippage ASTM D-4034:Warp: 59.2 lbs. min., Fill: 66.5 lbs. min.
Brush Pilling ASTM D-3511:Class 5.0 min.
Colorfastness to Light AATCC-16:40 Hours, Class 4.5
Crocking AATCC-8:Dry: Class 5.0, Wet: Class 5.0
Fluid Barrier:Crypton® Integrated Fluid Barrier
Antimicrobial:Crypton® fabric protection features silver ion technology which inhibits the growth of microbes on the protected surface.
California 191-53 Technical
Bulletin 117, Section E:Passed
UFAC:Class 1
NFPA 260:Class 1

Rational: This fabric was chosen for a multitude of reasons, such as fire resistance, colorfastness, break strength, and abrasion resistance.

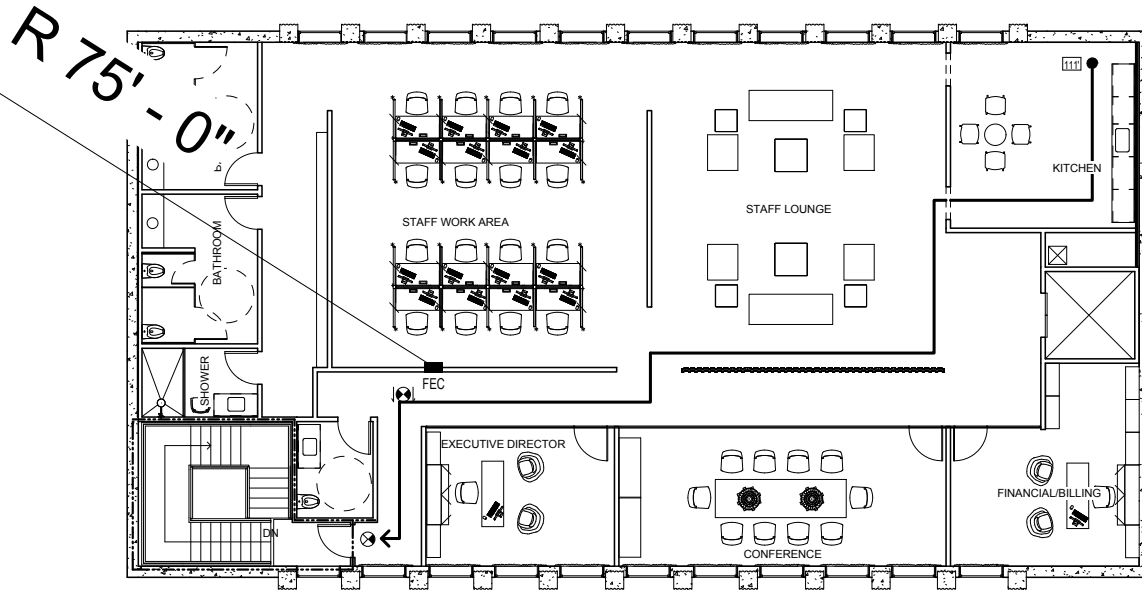
3RD FLOOR



3RD FLOOR RCP

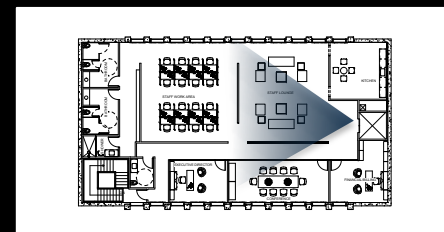


3RD FLOOR FIRE SAFETY PLAN

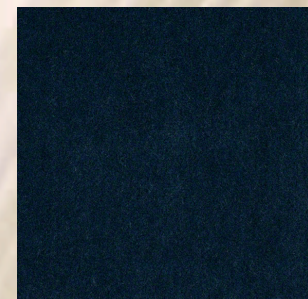
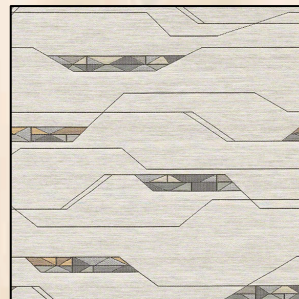
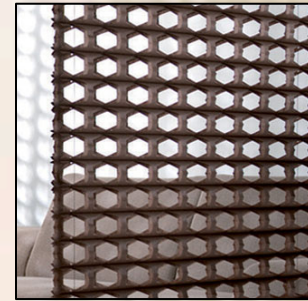


3RD FLOOR INVENTORY

- Staff bathrooms
- Kitchenette
- Staff lounge
- Staff workspace
- Executive directors office
- Billing/financial office
- Conference room

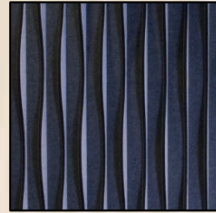


STAFF LOUNGE



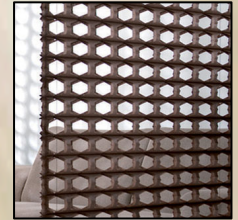
STAFF LOUNGE

UNIKA VAEV



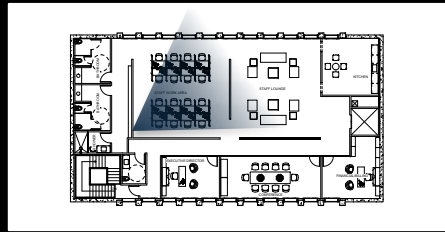
Ecoustic Waterfall
79/Charcoal
50% Recycled Polyester, 50% Virgin Polyester
ASTM E84 Class A

3FORM

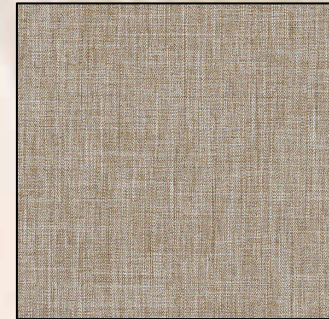
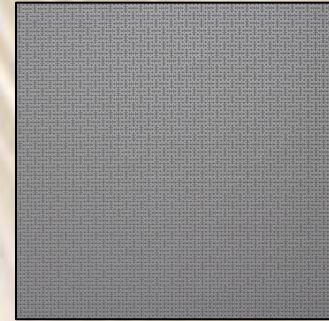


Parametre
Parametre is made of 100% non-woven polyester.
Mega configuration
Color: coffee bean

Rational: These materials have been selected as a way to add privacy as well as sound absorption. The playful textures also work to add movement to the space.



STAFF WORK AREA



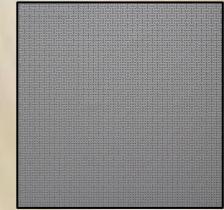
STAFF WORK AREA

CF Stinson: Bespoke 63691 Castlerock



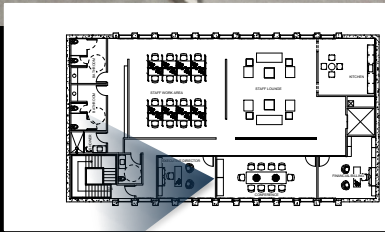
Content: 50% Post Consumer Recycled Polyester, 50% Polyester
Finish: Crypton® Non-PFOA Soil & Stain Protection
Abrasion Resistance ASTM D-4157: Exceeds 100,000 double rubs - heavy duty
Break Strength ASTM D-5034: Warp: 478.4 lbs. min., Fill: 367.2 lbs. min.
Tear Strength ASTM D-2261: Warp: 43.5 lbs. min., Fill: 41.2 lbs. min.
Seam Slippage ASTM D-4034: Warp: 59.2 lbs. min., Fill: 66.5 lbs. min.
Brush Pilling ASTM D-3511: Class 5.0 min.
Colorfastness to Light AATCC-16: 40 Hours, Class 4.5
Crocking AATCC-8: Dry: Class 5.0, Wet: Class 5.0
Fluid Barrier: Crypton® Integrated Fluid Barrier
Antimicrobial: Crypton® fabric protection features silver ion technology which inhibits the growth of microbes on the protected surface.
California 191-53 Technical
Bulletin 117, Section E: Passed
UFAC: Class 1
NFPA 260: Class 1

Mayer Fabrics: Interlochen Graphite IN-006



Category: Vinyl
Content: 100% Vinyl
Finish: PBG+
Width: 54"
Abrasion: 1,155,000 double rubs

Rational: This fabric was chosen for a multitude of reasons, such as fire resistance, colorfastness, break strength, and abrasion resistance.



EXECUTIVE OFFICE



EXECUTIVE OFFICE

CF Stinson: Glacier 5718 Sapphire



Content:30% Post-Industrial Recycled Polyester, 27% Polyester, 27% Acrylic, 16% Post-Consumer Recycled Polyester

Abrasion Resistance ASTM D-4157:Exceeds 60,000 double rubs - heavy duty

Break Strength ASTM D-5034:Warp: 100.0 lbs. min., Fill: 100.0 lbs. min.

Tear Strength ASTM D-2261:Warp: 14 lbs. min., Fill: 10 lbs. min.

Seam Slippage ASTM D-4034:Warp: 64.0 lbs. min., Fill: 66.0 lbs. min.

Brush Pilling ASTM D-3511:Class 5.0 min.

Colorfastness to Light AATCC-16:40 Hours, Class 4.0

Crocking AATCC-8:Dry: Class 4.0, Wet: Class 3.0

California 191-53 Technical

Bulletin 117, Section E:Passed

UFAC:Class 1

CF Stinson: Voltage 64269 Mink



Content:Pile: 70% Mohair, 30% Rayon Overall: 45% Mohair, 36% Cotton, 19% Rayon

Finish:Non-Fluorine Stain Resistant

Abrasion Resistance ASTM D-4157:Exceeds 102,000 double rubs - heavy duty

Break Strength ASTM D-5034:Warp: 282 lbs. min., Fill: 143.3 lbs. min.

Seam Slippage ASTM D-4034:Warp: 123.2 lbs. min., Fill: 117.8 lbs. min.

Brush Pilling ASTM D-3511:Class 5.0 min.

Colorfastness to Light AATCC-16:40 Hours, Class 4.0

Crocking AATCC-8:Dry: Class 4.0, Wet: Class 3.0

California 191-53 Technical

Bulletin 117, Section E:Passed

UFAC:Class 1

NFPA 260:Class 1



Rational:The fabrics listed were chosen for a multitude of reasons, such as fire resistance, colorfastness, break strength, and abrasion resistance. Glacier also has a gold rating from Greenguard

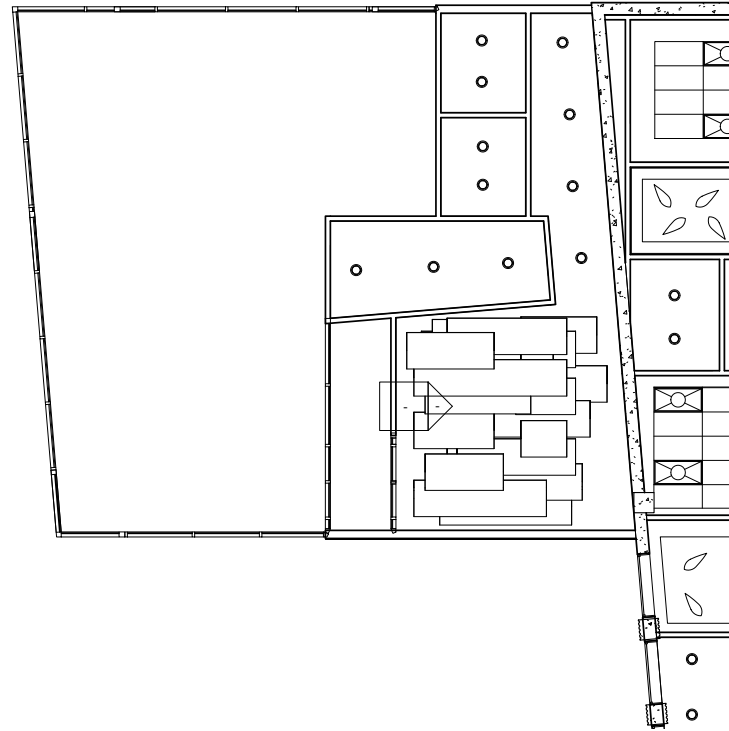
THE BUTTERFLY BAR



BUTTERFLY BAR FLOOR PLAN



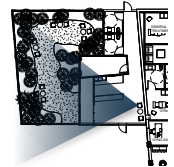
BUTTERFLY BAR RCP



THE BUTTERFLY BAR

THE BUTTERFLY BAR IS AT A CONCEPTUAL PHASE, ANY RULES AND REGULATIONS, AS WELL AS RECOMMENDATIONS TO KEEP THE BUTTERFLIES AND THE PEOPLE VISITING THE SPACE ARE UNKNOWN TO ME AND WILL BE DEFINED BY AN OUTSIDE SOURCE.





THE BUTTERFLY BAR



BUTTERFLY BAR

3FORM

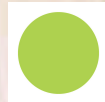
Varia Ecoresin-color-Patent
finish



Flooring



- Turtle G28



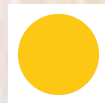
FORBO

Eternal Material

13022

Beton Concrete-Vinyle Flooring

- Pharaoh Y16



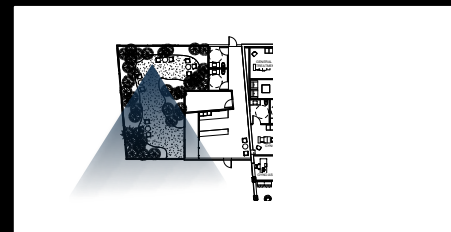
- Saltwater B12



- Jam V23



Rational: The material from 3for was chosen for its ability to transfer light, a custom lighting unit made from the material will give life and depth to the space. The flooring was selected for its durability and easy clean up.



THE BUTTERFLY BAR



THANK YOU FOR VIEWING